



PRIORITY

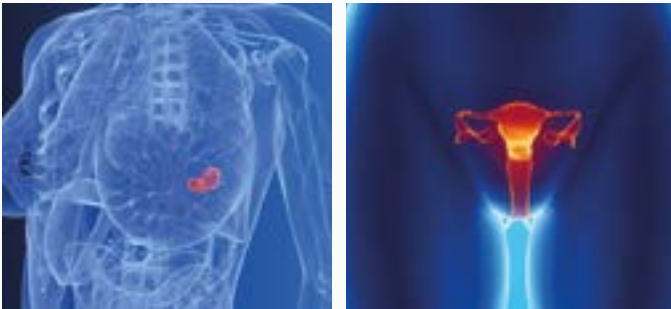
WOMEN'S  
HEALTH

by BIOSCIENCE INSTITUTE



**HELIXGYN** is a breast-ovarian cancer monitoring program that analyzes the genetic component that determines its development.

Breast ovarian cancer is the consequence of the accumulation of damage (somatic mutations) that forms in the DNA and that the body is unable to repair.



## PROCEDURE

To carry out the test, a simple blood sample is sufficient. The sample is sent to the Bioscience Institute laboratories, located at the University of Rome, which performs the extraction and sequencing of circulating free DNA with Next Generation Sequencing (NGS) techniques.

This analysis, repeated over time, allows you to know if damage is accumulating in the DNA which can be harmful for overall health.

## BREAST-OVARIAN CANCER

**HELIXGYN** is a test patented by the Bioscience Institute. This test is able to discover if there is an accumulation of DNA damages that are not being repaired, in healthy people that don't show any symptoms. This has been shown to be an early indicator of the initial phase of tumor development.

### DNA DAMAGE RISK FACTORS

✓ AGE	✓ CONTRACEPTIVES
✓ GENETIC PREDISPOSITION	✓ OVARIAN STIMULATION
✓ EARLY MENSTRUATION	✓ OBESITY
✓ LATE PREGNANCY	✓ UNHEALTHY DIET
✓ EARLY MENOPAUSE	✓ SMOKING
✓ INFERTILITY	✓ HPV VIRUS
✓ HORMONE REPLACEMENT THERAPY	✓ ALCOHOL

## WHY DO THE TEST

**HELIXGYN** verifies whether lifestyle and hormonal therapies (used to cope with menopause or for IVF or through contraceptives) have determined a progressive accumulation of damage (somatic mutations) in the DNA and therefore the promotion of the development of the breast ovarian cancer.

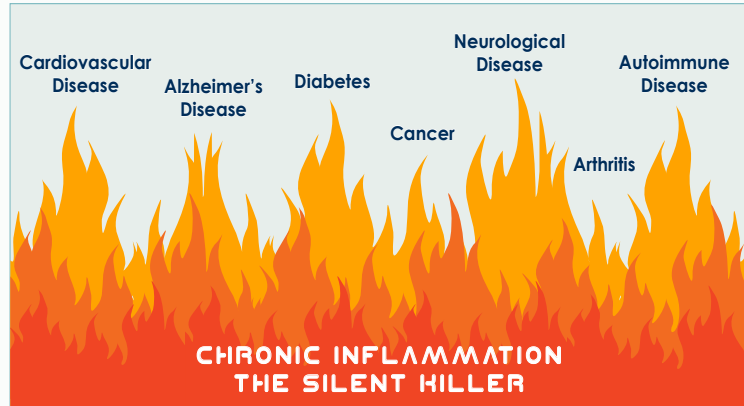
In this way, it is possible to directly treat physiological conditions that promote tumor development before it is formed.

# CYTOBALANCE

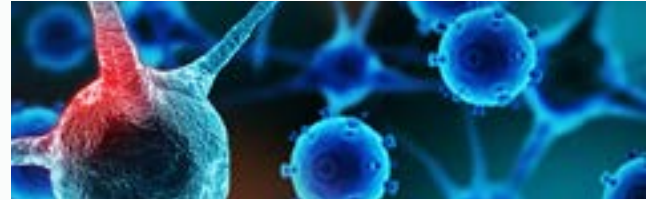
Inflammation is a natural response within the body to fight against infections, injuries, and toxins, in the attempt to heal itself. When harmful substances damage the cells, the body releases chemicals that trigger a response from the immune system.

Inflammation can be either short-lived (acute) or long-lasting (chronic). Acute inflammation goes away within hours or days. Chronic inflammation can last months or years, even after the first trigger is gone. Chronic inflammation may have a negative impact on your tissues and organs. Prolonged inflammation also weakens the immune system.

When you have chronic inflammation, your body's inflammatory response can eventually start damaging healthy cells, tissues, and organs. Over time, this can lead to DNA damage, tissue death, and internal scarring.



## CHRONIC INFLAMMATION



### SYMPTOMS

✓ JOINT AND MUSCLE STIFFNESS	✓ DARK CIRCLES AND BAGS
✓ ABDOMINAL-JOINT-CHEST PAIN	✓ BELCHING - BLOATING
✓ FATIGUE	✓ RASHES - ACNE
✓ HEADACHES	✓ EDEMA - WATER RETENTION
✓ FEVER - CHILLS	✓ MOUTH SORES

### PROCEDURE

**CYTOBALANCE** detects chronic inflammation in people without any symptoms. The test requires a simple blood draw in which the levels of cytokines (inflammatory biomarkers) are assessed.

### CONSEQUENCE OF INFLAMMATION

✓ CANCER	✓ ALZHEIMER'S DISEASE
✓ HEART DISEASES	✓ PARKINSON
✓ RHEUMATOID ARTHRITIS	✓ INFERTILITY
✓ DIABETES T2	✓ PULMONARY DISEASE
✓ OBESITY	✓ DEPRESSION
✓ DEGENERATIVE DISEASE	✓ AUTOIMMUNE DISEASE

# MICROBALANCE

Analysis of gut microbiota aimed to identifying gut bacterial balance.

## GUT MICROBIOTA FUNCTION

Gut microbiota acts as a shield against pathogens and is fundamental for immune system functioning. It plays a fundamental role in:

- the digestion and the absorption of food components (fiber and minerals)
- regulating the immune and metabolic responses
- the synthesis of vitamins and amino acids
- detoxification of dangerous compounds (e.g. carcinogenic molecules)
- the colonization of newborn gut during vaginal delivery

## WHY DO THE TEST

Bacterial imbalance is a hallmark of acute infections of the gastrointestinal tract and is associated with metabolic regulation, chronic kidney disease, pelvic inflammatory conditions, allergy, asthma, urogenital infections, mood, stress, anxiety, cancer, and critical factors associated with cardiovascular diseases. Also, to modulate weight loss or gain and obesity-associated disorders.



## GUT MICROBIOME

### MICROBIOTA INFLUENCING FACTORS

✓ HORMONES	✓ ALCOHOL	✓ DRUGS
✓ PHYSICAL ACTIVITY	✓ AGE	✓ STRESS
✓ NUTRITIONAL STATUS	✓ LIFESTYLE	✓ DIET

### INDICATIONS

Gut microbiota analysis is recommended in case of intestinal issues (colitis, recurrent diarrhea, constipation, flatulence, intestinal irregularity), urogenital infections, obesity, nutritional and pharmacological treatments.



### PROCEDURE

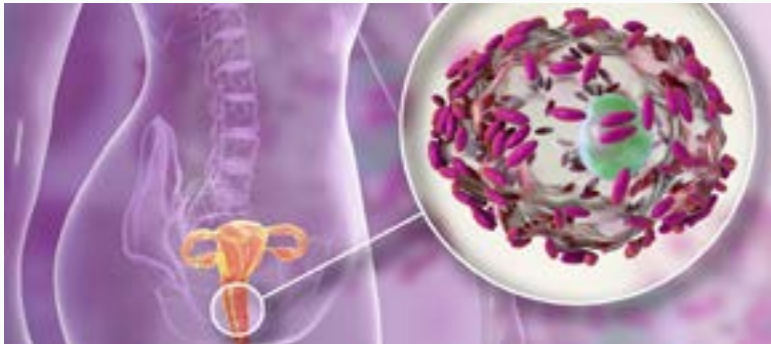
The collection of the stool sample can be carried out comfortably at home using the kit provided by Bioscience Institute.

The sequencing of the genes of the microbes living in the gut is done by the laboratory of Bioscience Institute located in Rome University using Next Generation Sequencing technology.

# MICROBALANCE

**MICROBALANCE VAGINA** is a test used to analyze vaginal microbiota enabling the detection of dysbiosis (bacterial imbalance) that is associated with urogenital diseases.

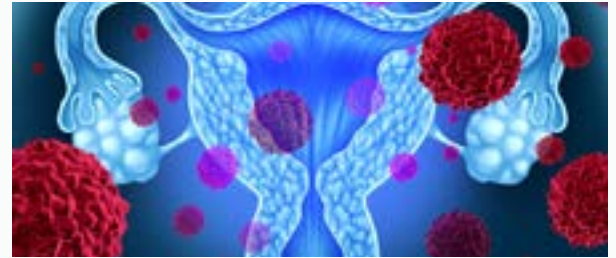
The vagina is colonized by billions of beneficial and protective germs in perfect balance with each other. When there is an imbalance of these germs, disturbances occur in the affected apparatus. The bacterial imbalance of vaginal germs (vaginal microbiome), for example, is associated with the risk of human papillomavirus (HPV) infection which is the main cause of head and cervical cancer.



## PROCEDURE

The collection of the vaginal swab can be carried out comfortably at home using the kit provided by Bioscience Institute. The sequencing of the genes of the microbes living in the vagina is done by the laboratory of Bioscience Institute located in Rome University using Next Generation Sequencing technology.

## VAGINAL MICROBIOME



The **VAGINAL MICROBIOTA TEST** is aimed at all women who:

- ✓ Are pregnant
- ✓ Have abnormal vaginal discharge, itching, burning, dyspareunia, or other gynecological symptoms
- ✓ Have difficulty conceiving
- ✓ Have unprotected sex
- ✓ Recent antimicrobial treatments
- ✓ Diaphragm-spermicide use
- ✓ Spermicide-coated condoms
- ✓ Hormonal contraceptives

## DIAGNOSIS AND THERAPIES SUPPORTED

- ✓ VAGINAL EUBIOSIS, CANDIDIASIS, VAGINOSIS
- ✓ FUNGAL AND AEROBIC VAGINITIS
- ✓ SEXUALLY TRANSMITTED DISEASES
- ✓ GENITAL ULCERS AND OTHER VAGINAL DISEASES

# IMMUNE BALANCE

The slow decline of the body's defenses begins much earlier than one might think.

**IMMUNE BALANCE** is the test that enables us to intercept signs of slowdown of the immune defense system at any age, even when you are in an apparently good state of health, for a proactive prevention of health problems.

## IMMUNO DEFICIENCY CONDITIONS IF FREQUENT AND RECURRENT

✓ PNEUMONIA, BRONCHITIS	✓ ANEMIA,
✓ INFECTIONS,	✓ DIARRHEA
✓ INFLAMMATION	✓ LOSS OF APPETITE
✓ BLOOD DISORDER	✓ FATIGUE,
✓ CRAMPING	✓ NAUSEA

## INDICATIONS

**IMMUNE BALANCE** is recommended to people of every age who want to intercept immune parameter deviation from healthy values before the onset of health issues.

## WHY DO THE TEST

The aging of the immune system reduces the number of years you can live in good health, without chronic diseases and disabilities.

Not all people age the same way. It all depends on the strain the immune system is subjected to throughout life. Evaluating the balance of the immune system allows us to intercept its functioning before it has significant consequences on your health.

# IMMUNE DEFICIENCY

## RISK FACTORS

Chemical and biological agents, together with trauma, continuously threaten health. Fortunately, the organism is equipped with a powerful weapon to counteract them: the immune system.

Promoting immune system balance, helps to counteract the development of age-associated, degenerative, inflammatory and neoplastic diseases.



## PROCEDURE

The **IMMUNE BALANCE** test requires a simple blood draw in which the levels of immune cells and vitamin D are assessed.

# GTEST

Is a CE-IVD test intended for non-invasive prenatal screening for the evaluation of fetal aneuploidies. The **GTEST** offers 5 levels of tests that range from the three common trisomies (Trisomy 13, 18 and 21) to analysing abnormalities associated with all the chromosomes.

# ULTRANIPT

Is more comprehensive than Gtest and is intended not only for analysing 110 chromosomal abnormalities but also provides relative clinical interpretation for certain deletions and duplications.

# OMNIPT

Is the most extensive prenatal test that allows the detection of everything that Gtest and ULTRANIPT provide in addition to the detection of 137 genetic diseases not linked to a hereditary transmission and which, due to their characteristics, are as unpredictable as serious.



## NON-INVASIVE PRENATAL TEST

Aneuploidy is the presence of an abnormal number of chromosomes in a cell, for example a human cell having 45 or 47 chromosomes instead of the usual 46. Aneuploidies can be differentiated as trisomies (characterized by the presence of an extra chromosome which is one more than the normal two that is present in an individual), sex chromosome aneuploidies (characterized by the absence or presence of a sex chromosome).

### INDICATIONS

- PREGNANCY AT RISK
- PREGNANCY FROM IVF
- INHERITED GENETIC DISEASES
- FAMILY HISTORY FOR ANEUPLOIDIES
- EGG DONATION
- TWIN PREGNANCY



### PROCEDURE

The NIPT tests require 8ml of maternal peripheral blood. It can be drawn starting from 10th week of gestation.

### WHY DO THE TEST

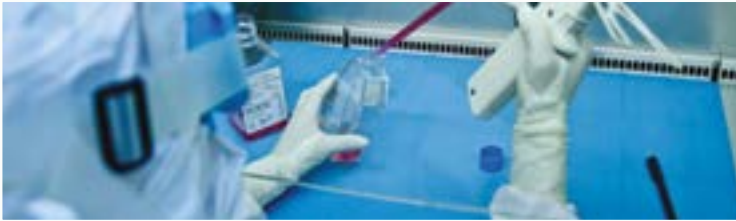
- Simple to proceed as a normal venous blood sample is sufficient
- Performed early from the 10th week of gestation
- Sensitivity and specificity greater than 99% for trisomies 21, 18, 13
- Based on a validated and CE certified bioinformatics analysis
- Results in approximately seven business days

# LIPOSKILL

## AGING SKIN CARE

**LIPOSKILL** is a skin rejuvenation product containing 100 % stem cells derived from one's own fat. It can be used anywhere in the body for a number of treatments, including filling both fine and deep lines, as well as wrinkles.

Following the **LIPOSKILL** injection, the newly active cells go to work causing a dynamic regeneration response at the cellular level while rejuvenating the skin or filling the wrinkles and deep lines caused by aging. The introduction of millions of powerful new cells into the skin allows the replacement of lost volume with a natural, youthful looking result.



### LONG LASTING RESULTS

**LIPOSKILL** is the only solution that lasts as long as a cells life and therefore for several years.



#### WHAT TO EXPECT

- » Fine and deep wrinkles disappear
- » Skin becomes brighter and more toned
- » Stable results without the need for further treatments
- » Natural and radiant looking

### PROCEDURE

The procedure starts with the collection of a small fat sample from the patient. After two weeks, the necessary time for the STEM CELL extraction and expansion, it is possible to have a treatment and store them to have others later.

### ADVANTAGES

The difference between artificial fillers and **LIPOSKILL** is that wrinkles are filled exclusively with one's own cells and not with foreign, artificial components. The procedure restores the youthful contour and shape of the face. It performs a dual action: increasing the volume, and renewing the skin.

**LIPOSKILL** is a natural method that does not rely on injecting any artificial components into the skin. Treatments such as Botox can reduce the effect of wrinkles, but they cannot restore youth to your skin. Botox will smooth out the wrinkles, but still leave you with 'old-looking' skin, so we recommend **LIPOSKILL** even before a Botox treatment.

### RESULTS

The gradual increase of the collagen and elastin, produced by the implanted stem cells, start to be visible in 2-3 weeks and lasts for several years

The reduction in the appearance of fine lines and the improved skin texture are the most obvious results.

The skin looks smoother, healthier, and brighter.



# GYNSKILL



**GYNSKILL** is the integration of regenerative therapies aimed to treat functional and aesthetic conditions associated with menopause. It is an innovative and non-surgical therapy based on Adipose Derived Stem Cells (ADSCs) that restores the appearance and function of the female genital area.

## INDICATIONS

**GYNSKILL** is recommended for women who have itching, burning, dyspareunia, vaginal dryness and bleeding which negatively affect the entire sexual response cycle, inducing significant changes in desire, arousal and satisfaction at menopause and beyond. These conditions may be associated with increased risk of bacterial vaginosis due to vaginal pH changes and urinary tract infection or stress urinary incontinence.

**GYNSKILL** is also recommended to women for aesthetics and complete rejuvenation of the female genitals.

## WHY STEM CELLS THERAPY

The STEM CELLS release several growth factors and replace old cells with new ones. This results in the regeneration of tissues, improving sexual function and creating a more youthful appearance.

- Restores blood flow, muscle tone, and volume
- Does not leave scars
- Completely safe
- Provides natural & long-lasting results

# FEMALE REJUVENATION



## PROCEDURE

The procedure starts with the collection of a small fat sample from the patient. After two weeks, the necessary time for the STEM CELL extraction and expansion, it is possible to have a treatment and store them to have others later.

## RESULTS

- Decreased urinary incontinence and pain
- Increased natural lubrication
- Tighter vaginal opening, younger and smoother vulvar skin
- It minimizes the effects of dryness
- It helps make the G-spot more responsive

**OVOSKILL** is the therapy used to reverse premature ovarian failure with the use of Adipose Derived Stem Cells.

Ovaries usually produce hormones and eggs until the early fifties. When they stop working most women enter menopause. However, in some cases women can enter early menopause because of Premature Ovarian Failure (POF), a common gynecological endocrine disease also known as primary ovarian insufficiency.

POF is characterized by the loss of ovarian function below 40 years of age. But sometimes, it can be a non-reversible pathology leading to infertility thus severely affecting women both physically and mentally.



SYMPTOMS	COMPLICATIONS
✓ AMENORRHOEA	✓ OSTEOPOROSIS
✓ ESTROGEN DEFICIENCY	✓ CARDIOVASCULAR DISEASES
✓ ELEVATED GONADOTROPIN	✓ HOT FLUSHES, NIGHT SWEATS
✓ REDUCED OVARIAN FOLLICLES	✓ VAGINAL DRYNESS, MOOD SWINGS
✓ INFERTILITY	✓ EARLIER COGNITIVE FUNCTION DECLINE

### INDICATIONS

**OVOSKILL** is recommended for women who have:

- ✓ Undergone chemotherapy and radiation therapy
- ✓ A smoking habit or exposed to chemicals and viruses
- ✓ Auto immune response to ovarian tissue
- ✓ Infertility

### PROCEDURE

**OVOSKILL** is based on the collection of only 20 cc of fat during a quick and painless outpatient procedure.

After 2 weeks, the autologous expanded Adipose Derived Stem cells are delivered through intra-ovarian injection.



### RESULTS

- » Repair of damaged ovaries
- » Support the formation of follicles
- » Higher success rates for IVF
- » Resuming of menstruation
- » Totally safe and reliable

**HAIRSKILL** is an innovative, effective and safe method, based on the use of stem cells derived from adipose tissue. It is used to treat progressive weakening of the hair bulb and thinning of hair which results in hair loss. It is also highly recommended to be used in combination with hair transplants to guarantee long lasting results.

### PROCEDURE

**HAIRSKILL** is a very simple procedure that requires the collection of a small amount of adipose tissue that can be harvested in a simple outpatient session.

In three weeks, the Adipose Derived Stem Cells extracted from fat are injected into the microenvironment surrounding the hair bulb. The injected cells release specific growth factors that prolong the duration of the anagen phase and improves the regeneration of hair.

### RESULTS

Initial results are visible in 1 month and they gradually increase over time. It is a biological product and the results vary from patient to patient according to biological age of the patient.



### WHAT CAUSES HAIR LOSS

✓ FREQUENT HAIR STYLING	✓ ABNORMAL THYROID
✓ VITAMIN DEFICIENCY	✓ BLOOD PRESSURE MEDICINES
✓ DIETING (RAPID WEIGHT LOSS)	✓ HIGH DOSES OF VITAMIN A
✓ TOXIC SUBSTANCES	✓ PREGNANCY, MENOPAUSE
✓ EXTREME PHYSICAL STRESS	✓ BIRTH CONTROL PILLS
✓ ANEMIA	✓ GENETICS
✓ EXTREME EMOTIONAL STRESS	✓ AUTOIMMUNE SKIN DISEASE

### THE SIGNS OF HAIR LOSS

- » Seeing more hair fall out daily either on your brush, on the floor, in showers, on your pillows, or in the sink
- » Seeing noticeable patches of thinner or missing hair, including a part on the top of your head that gets wider
- » Seeing scalp skin through hair
- » Fragile hair





[www.bioinst.ae](http://www.bioinst.ae) - [info@bioinst.ae](mailto:info@bioinst.ae) - Tel. +971 04 37 57 220

Bioscience Clinic - Middle East FZ-LLC  
Al Razi Bld, 64 Block B Dubai HealthCare City

SAN MARINO

MILANO

ROMA

DUBAI

HONG KONG



UNI EN ISO 9001:2015

