

# HELIXAFE

CANCER DRIVER INTERCEPTION

HELIXAFE INTERCEPTS THE CANCER DRIVER  
CONDITION BEFORE THE TUMOUR IS FORMED

 **BIOSCIENCE**  
CLINIC MIDDLE EAST

+971 4 37 57 220

[www.bioinst.ae](http://www.bioinst.ae) - [info@bioinst.ae](mailto:info@bioinst.ae)

Al Razi Building n.64 - Block B  
Dubai HealthCare City - Dubai - UAE





## WHY HELIXAFE CAN PREVENT CANCER ?

Every day, our DNA is damaged thousands of times by natural causes and external factors (alcohol, drugs, pollution, hormones, smoking, unhealthy food, radiation, stress....)

Our body repairs these damages by using a body function focused on monitoring and maintaining the DNA integrity. In case of deficiency of this function, the DNA cannot be repaired, so the damages are progressively accumulated. The progressive accumulation of these unrepaired damages (somatic mutations) is an initial stage in the development of tumours when people are still healthy and don't have any symptoms.

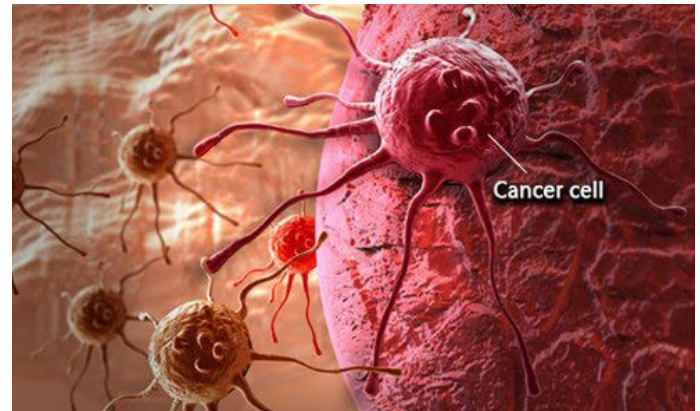
**HELIXAFE** investigates the initial genetic imbalance stage that precedes the formation of tumours and can last up to 5-15 years.

**HELIXAFE** assessment is based on a recently discovered technology which requires a simple blood sample and investigates the real conditions of the DNA in relation to the possible development of a tumour. It does not check hereditary predisposition as other genetic tests.

## WHO SHOULD DO HELIXAFE ?

**HELIXAFE** is indicated for any person and is mostly recommended in the presence of:

Stress	Intestinal disorders	Allergies
Chronic diseases	Alcohol consumption	Family history of cancer
Exposure to chemicals	Viral and bacterial infection	Chronic inflammation
History of smoking	Hormone therapy	Exposure to radiation
Exposure to pollution	Overexposure to the sun	Food additives



## HELIXAFE PREVENTION PROGRAM

To assess the progressive accumulation of DNA damage, the test must be repeated regularly.

The Cancer Driver Condition can always be treated with bio-preventive agents and targeted interventions that repair DNA damage and cancer development.

There is a second level of cancer prevention programs that allows to provide in-depth investigation in the conditions related to breast/ovarian, lung and colon cancer.

- **HELIXGYN** monitors genes related to OVARIAN AND BREAST CANCER
- **HELIXMOKER** monitors genes related to LUNG CANCER
- **HELIXCOLON** monitors genes related to COLON CANCER